

A hand with dark nail polish holds a long, thin black stick that supports a large, spherical balloon made of black sheer tulle. The balloon has a gathered neck and a small, flared tulle tail. The background is a plain, light gray.

## Events & Celebrations

*Fitler Club*

*24 S 24th Street  
Philadelphia, PA*

# About Fitler Club

---

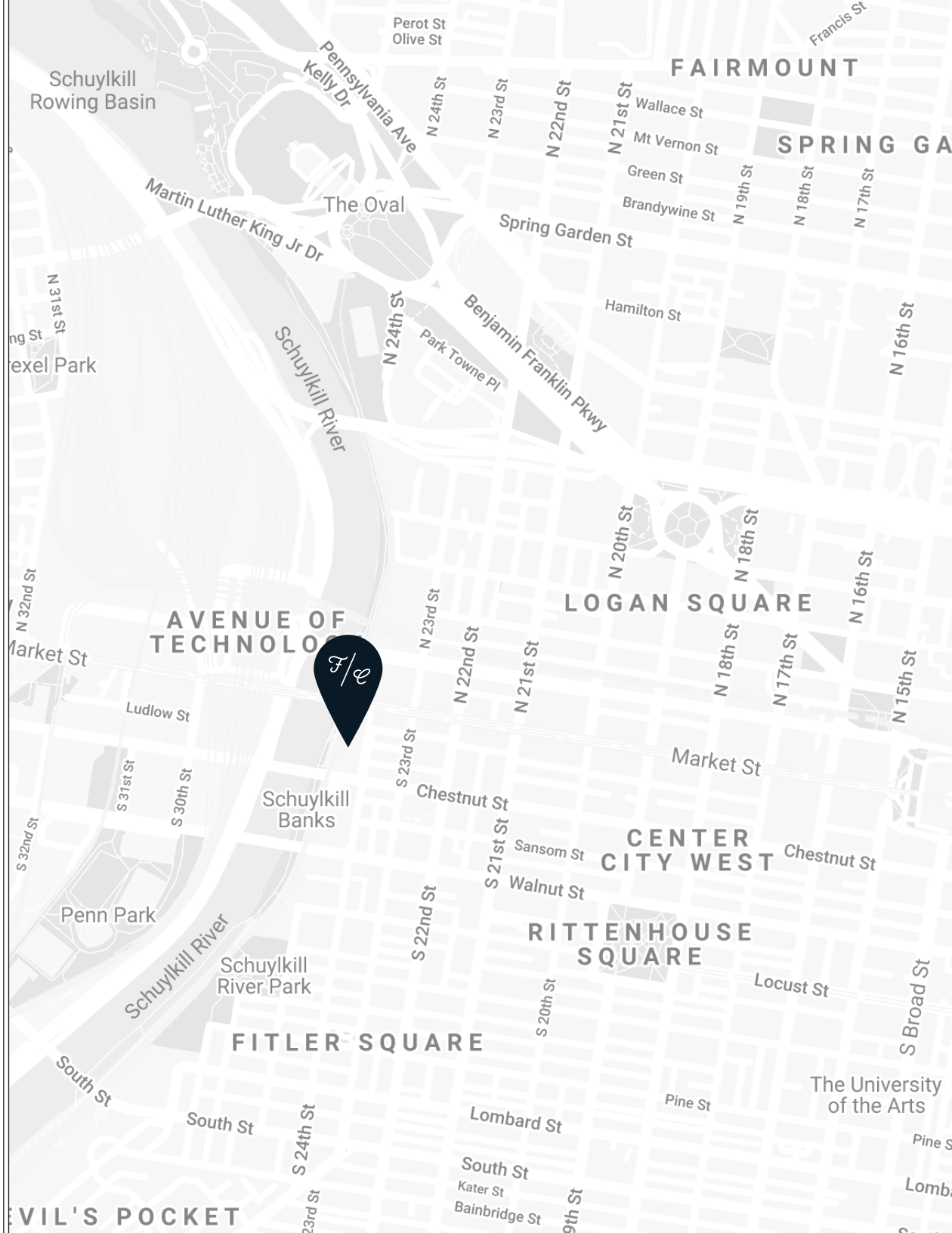
*Something posh yet casual,  
exclusive yet diverse, hedonistic  
yet philanthropic, a one-stop shop  
for the modern urbanite to achieve  
personal and social fulfillment -  
something he's calling Fitler Club.*

- PHILLY MAG

A charity gala for 500, a mitzvah for 250 or an anniversary for 50... every event is uniquely yours and your guests will be talking about it for years to come...

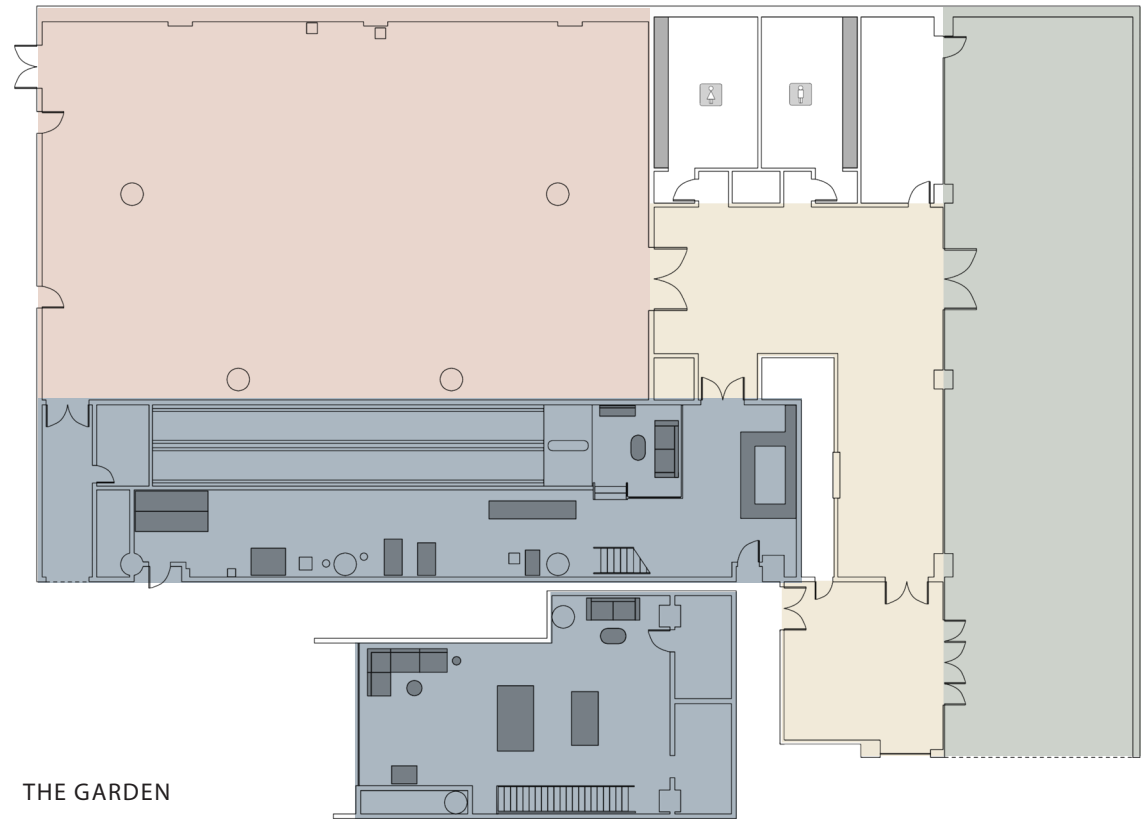
## LOCATION, LOCATION, LOCATION

Planes, trains or automobiles, the club is just a short walk from 30th St Station, an easy exit off of 76, or a quick Uber from the airport...



# Level 0 Event Spaces

10,000 sq. ft. of event space to host and cater everything from intimate weddings and rehearsal dinners to grand celebrations with everyone you know... *and a lifetime of Anniversaries thereafter.*



- THE GARDEN
- THE FOYER
- THE BALLROOM
- THE TROPHY ROOM





# The Garden

---

## THE SPACE

3,700 sq. ft.

## CAPACITY

150 Reception

## FUNCTIONS

Reception

Cocktail Hour

A gorgeous gathering space before the big event inside or the perfect spot for a more intimate outdoor event under the stars...

*Custom tent available for inclement weather.*



10,000 sq. ft. of flexible high-tech event space to host and cater everything from intimate gatherings to large scale conferences... and every wedding, birthday and celebration in between!



## The Ballroom

### THE SPACE

4,600 sq. ft.

### CAPACITY

300 Rounds  
*with dance floor*

### FUNCTIONS

Celebrations  
Reception



# The Trophy Room

---

The most unique event space in Philadelphia offers bowling, billiards, table tennis, pop-a-shot and your favorite old-school arcade games.

## THE SPACE

3,650 sq. ft.

*incl. bowling + games*

1,175 sq. ft.

*mezzanine only*

## CAPACITY

150 Reception

## FUNCTIONS

Cocktail Hour

Reception

Pre-Party

After Party

Dinner

Brunch





# Level 2 Event Spaces

## THE CHEF'S TABLE

725 sq. ft.

Capacity: 40

Functions: Breakfast, Brunch, Lunch, Dinner, Meeting

## THE FOUNDERS ROOM

186 sq. ft.

Capacity: 16

Functions: Breakfast, Brunch, Lunch, Dinner

## THE BACK BAR

1050 sq. ft.

Capacity: 65

Functions: Breakfast, Brunch, Lunch, Dinner, Reception, Meeting

## THE TERRACE + BALCONY

2250 sq. ft.

Capacity: 75

Functions: Breakfast, Brunch, Lunch, Dinner, Reception

## THE GALLERY

1700 sq. ft.

Capacity: 100

Functions: Reception

## THE SQUARE

1316 sq. ft.

Capacity: 100

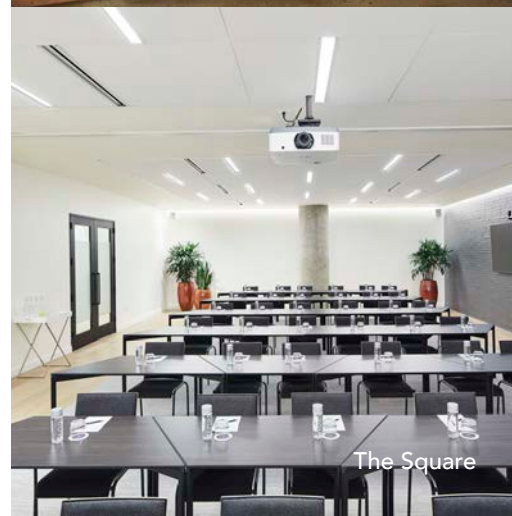
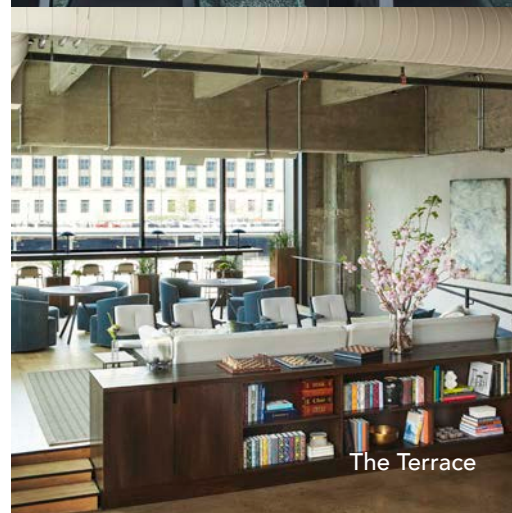
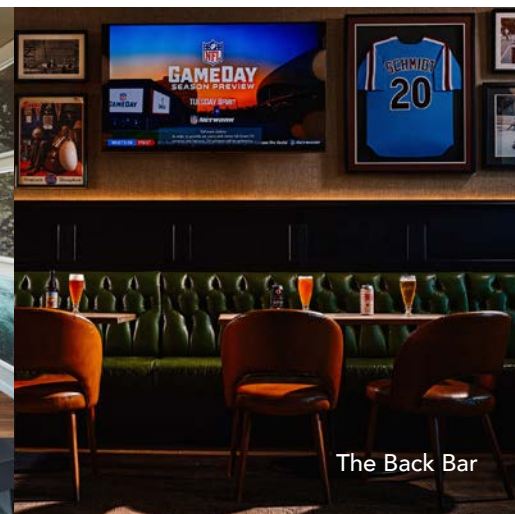
Functions: Breakfast, Brunch, Lunch, Dinner, Reception, Meeting

## THE SCREENING ROOM

744 sq. ft.

Capacity: 34

Functions: Private Screening, Meeting



# Fitler Rooms

The only 14 rooms in the city to have a fully-loaded private club with guest access to every amenity offered. It's all here; from fine linens, lavish bath products, and a thoughtfully curated mini bar to bowling lanes, an indoor pool and nightly movies in The Screening Room. Let's spend the night together.

## THE ROOMS

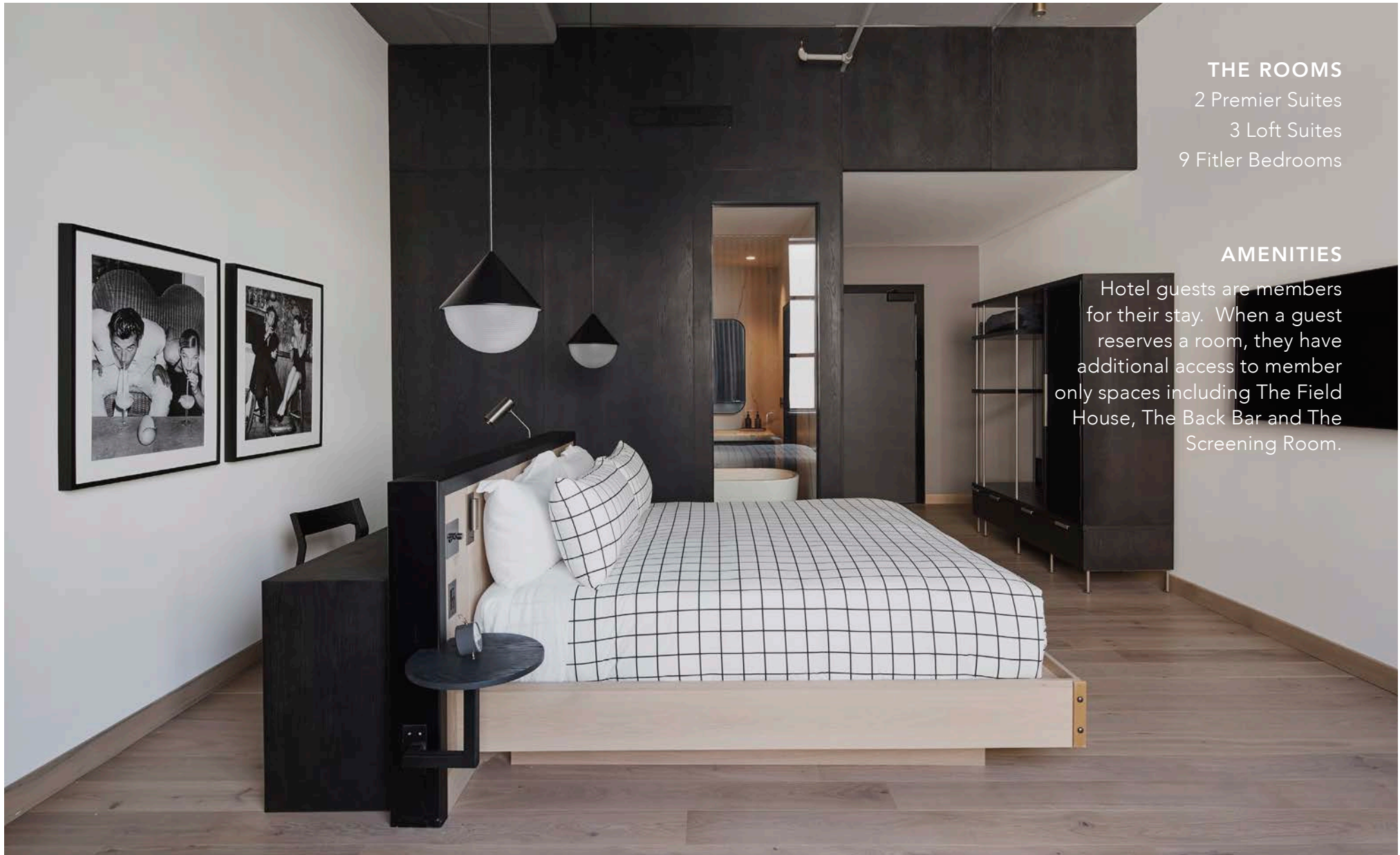
2 Premier Suites

3 Loft Suites

9 Fitler Bedrooms

## AMENITIES

Hotel guests are members for their stay. When a guest reserves a room, they have additional access to member only spaces including The Field House, The Back Bar and The Screening Room.





# Sample Catering Menu

*\* indicates Fitler Favorites*



## COCKTAIL HOUR

### Butlered Hors d'Oeuvres

Grilled Baby Artichokes, Black Garlic Aioli\*

Watermelon Ceviche, Avocado, Jalapeno, Sesame Cone

Smoked Salmon, Bagel Chips, Scallions\*

Seared Scallop, Pork Belly, Gojuchang Aioli

New York Dog, House Mustard, Everything Spice\*

Foie Gras Canape, House Jam, Cumin Caramel\*

### Organic Grain Bowls Market Station\*

Grains: Red Quinoa, Farro Piccolo, and Cracked Wheat

Proteins: Yellowfin Tuna, Roasted Chicken, Crispy Pork Shoulder, Poached Salmon

Vegetables: Sweet Potatoes, Cherry Tomatoes, Cucumbers, Green Beans, Pearl Onions

Cheeses: Goat Cheese, Buffalo Mozzarella, Feta

Sauces: Balsamic Vinaigrette, Tahini Yogurt, Green Goddess

## DINNER

### First Course

Treviso and Baby Tango Salad, Grapefruit, Stone Fruit, Candied Pecans, Stracciatella\*

*Served with Artisanal Bread and Whipped Butter*

### Tablesides Entree Selection

Grilled Wagyu Flat Iron, Whipped Sweet Potatoes, Crispy Brussels Sprouts, Truffle Demi\*  
(or)

Roasted Branzino, Cauliflower, Crispy Capers, Golden Raisin Brown Butter\*

*Silent Vegetarian Entree offered Tableside*

## DESSERT

### Butlered Miniature Desserts

Chocolate Pot de Creme | Whipped Creme Milk Chocolate Pearls\*

Milkshake Shooters | Vanilla Caramel

Homemade Warm Donut Holes | Chocolate, Caramel & Seasonal Dipping Sauces\*

Cheesecake Bites | Chocolate-Dipped, Vanilla Bean

La Colombe Caffeinated & Decaffeinated Coffee & Tea



# Sample Bar Menu

## HOSTED BAR

### Deluxe Bar

Frico Bianco, Delle Venezie, Italy

Sauvignon Blanc, Manta, Valle de Maule, Chile

Frico Rosso, Tuscany, Italy

Cabernet Sauvignon, Sagelands, Columbia Valley, WA

Assorted Beer

Tito's & Stolli Vodka

Tanqueray & Bluecoat Gin

Cruzan & Myer's Dark Rum

Cazadores Blanco & Espolon Reposado Tequila

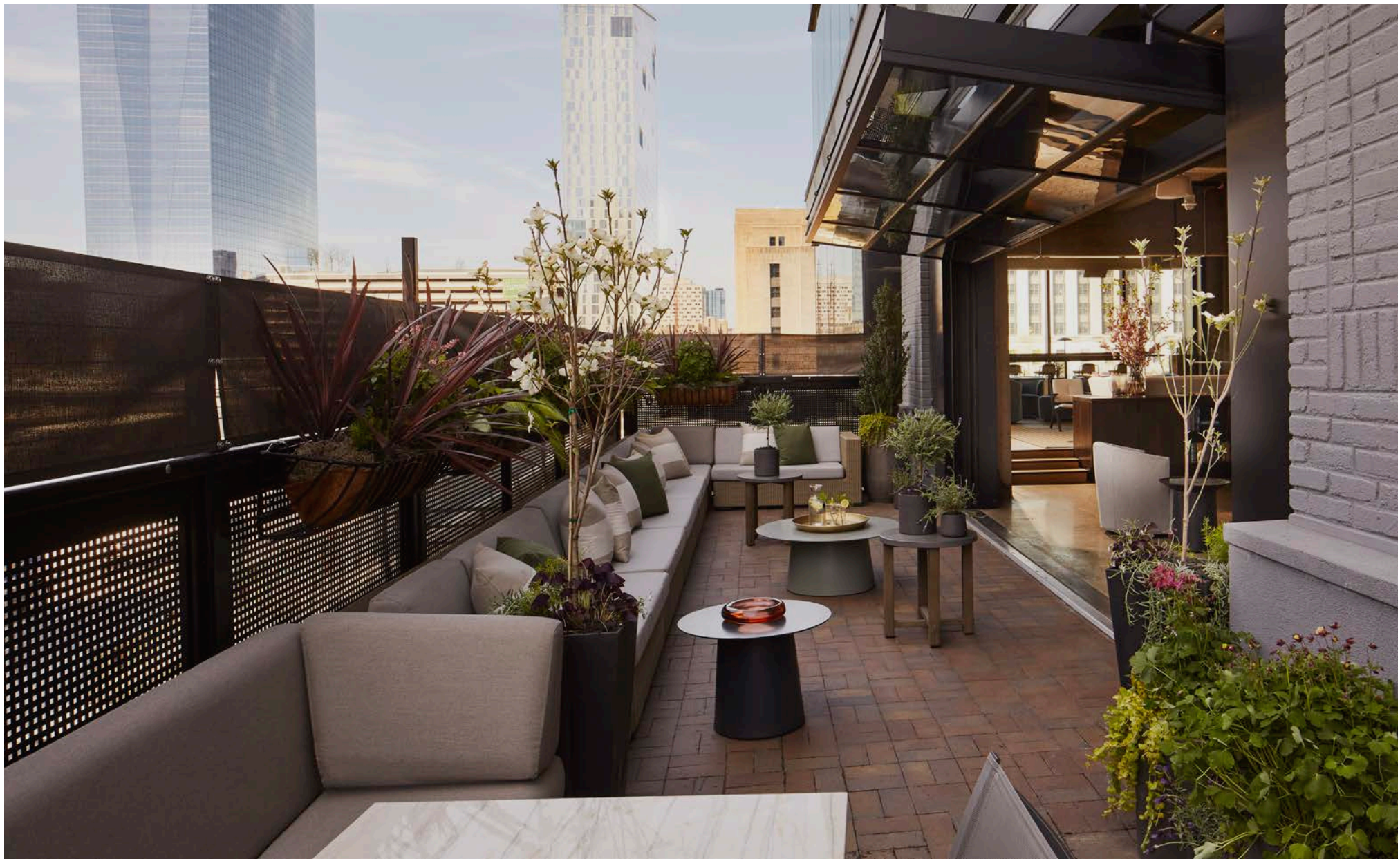
Jim Beam & Buffalo Trace Bourbon

Bulleit & Resurgent Rye

Johnny Walker Black & Famous Grouse Scotch



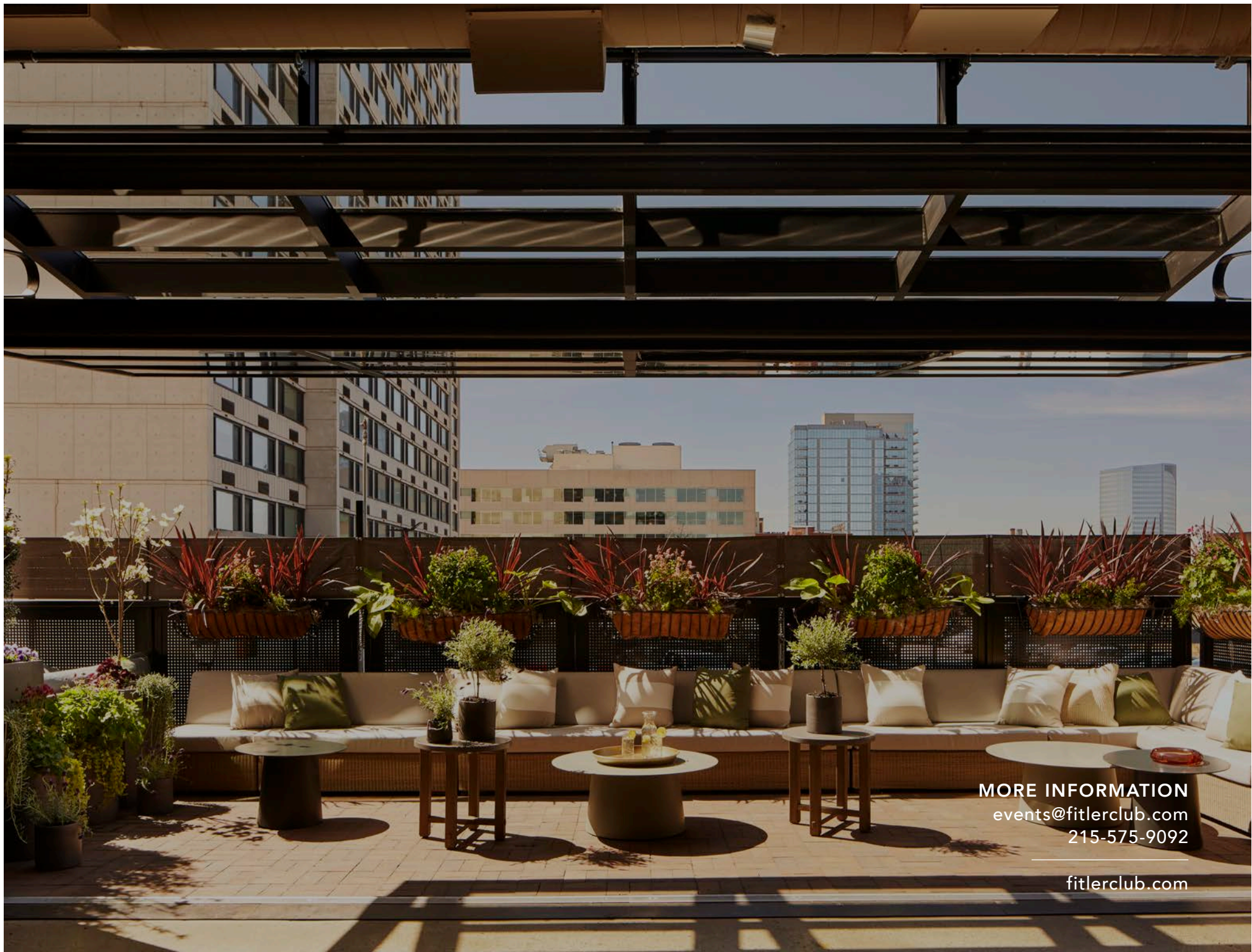




## Membership

Our private membership club is more than a social club - Fitler Club is a progressive community of thought leaders and changemakers instrumental in revitalizing Philadelphia and its efforts for growth. We invite you to join us. **Preferred pricing for meetings and events for all members.** For membership details, email [membership@fitlerclub.com](mailto:membership@fitlerclub.com).





**MORE INFORMATION**  
[events@fitlerclub.com](mailto:events@fitlerclub.com)  
215-575-9092

[fitlerclub.com](http://fitlerclub.com)