



Mitzvahs

Fitler Club

*24 S 24th Street
Philadelphia, PA*

About Fitler Club

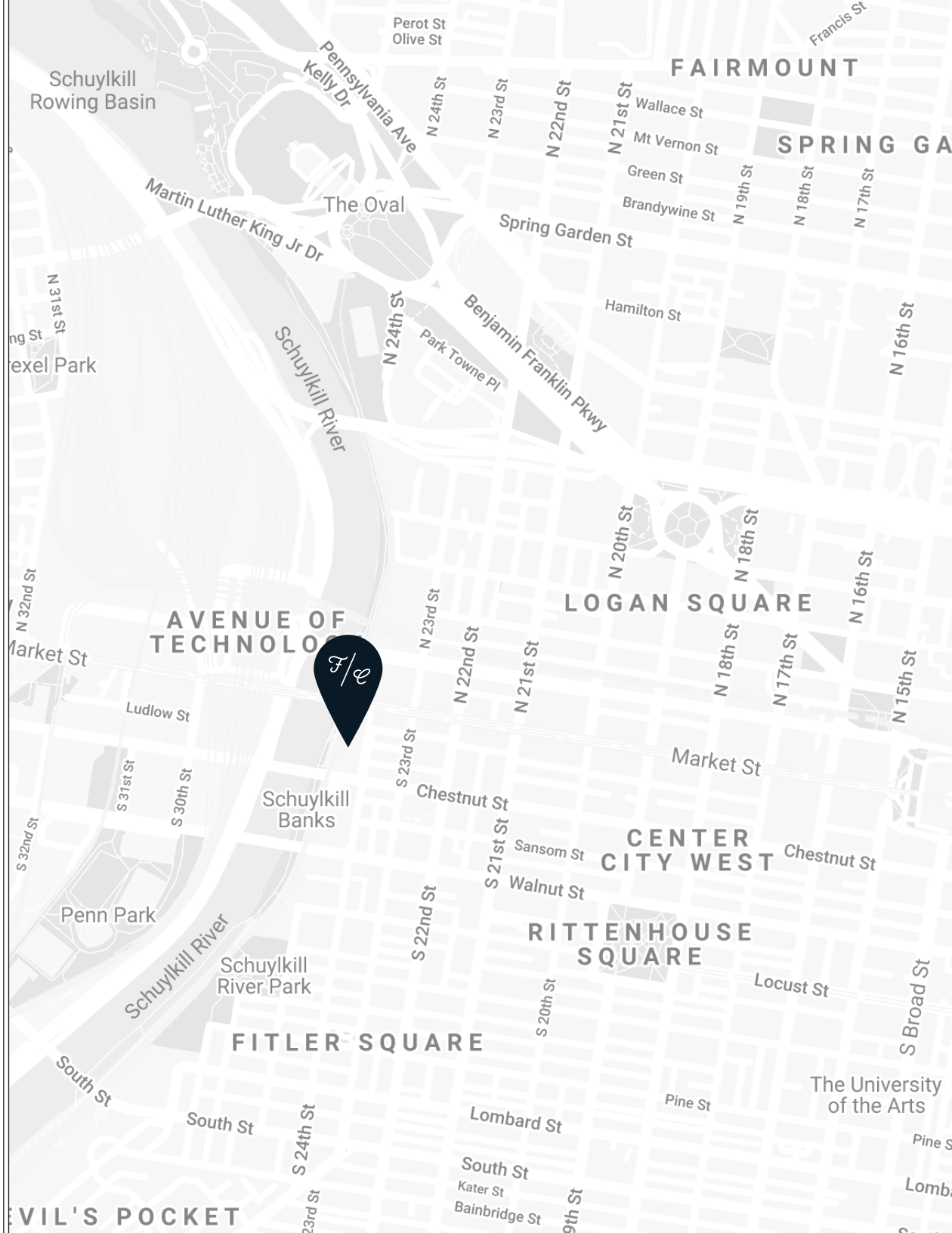
*Something posh yet casual,
exclusive yet diverse, hedonistic
yet philanthropic, a one-stop shop
for the modern urbanite to achieve
personal and social fulfillment -
something he's calling Fitler Club.*

- PHILLY MAG

A charity gala for 500, a mitzvah for 250 or an anniversary for 50... every event is uniquely yours and your guests will be talking about it for years to come...

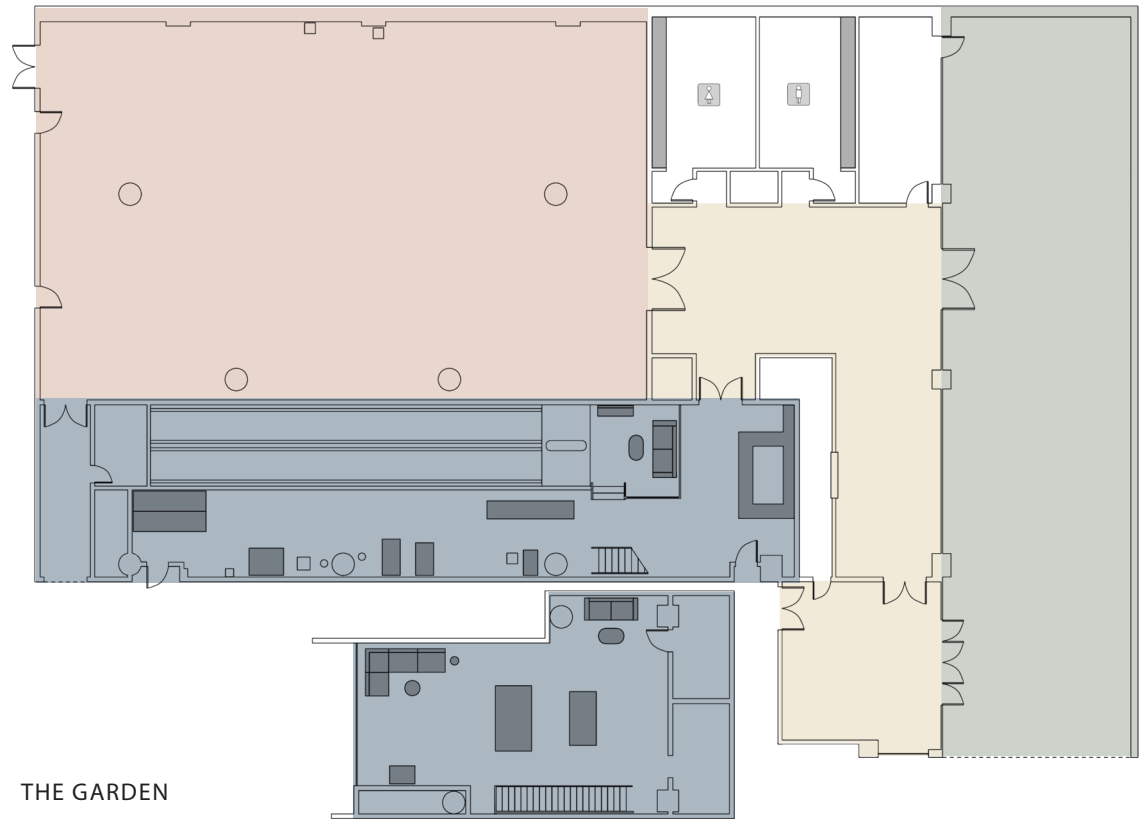
LOCATION, LOCATION, LOCATION

Planes, trains or automobiles, the club is just a short walk from 30th St Station, an easy exit off of 76, or a quick Uber from the airport...



Level 0 Event Spaces

10,000 sq. ft. of event space to host and cater everything from intimate weddings and rehearsal dinners to grand celebrations with everyone you know... *and a lifetime of Anniversaries thereafter.*



- THE GARDEN
- THE FOYER
- THE BALLROOM
- THE TROPHY ROOM



The Garden

THE SPACE

3,700 sq. ft.

CAPACITY

150 Reception

FUNCTIONS

Reception

Cocktail Hour

A gorgeous gathering space before the big event inside or the perfect spot for a more intimate outdoor event under the stars...

Custom tent available for inclement weather.

10,000 sq. ft. of flexible high-tech event space to host and cater everything from intimate gatherings to large scale conferences... and every wedding, birthday and celebration in between!



The Ballroom

THE SPACE

4,600 sq. ft.

CAPACITY

300 Rounds
with dance floor

FUNCTIONS

Celebrations
Reception

The Trophy Room

The most unique event space
in Philadelphia offers bowling,
billiards, table tennis,
pop-a-shot and your favorite
old-school arcade games.

THE SPACE

3,650 sq. ft.

incl. bowling + games

1,175 sq. ft.

mezzanine only

CAPACITY

150 Reception

FUNCTIONS

Cocktail Hour

Reception

Pre-Party

After Party

Dinner

Brunch



Fitler Rooms

The only 14 rooms in the city to have a fully-loaded private club with guest access to every amenity offered. It's all here; from fine linens, lavish bath products, and a thoughtfully curated mini bar to bowling lanes, an indoor pool and nightly movies in The Screening Room. Let's spend the night together.

THE ROOMS

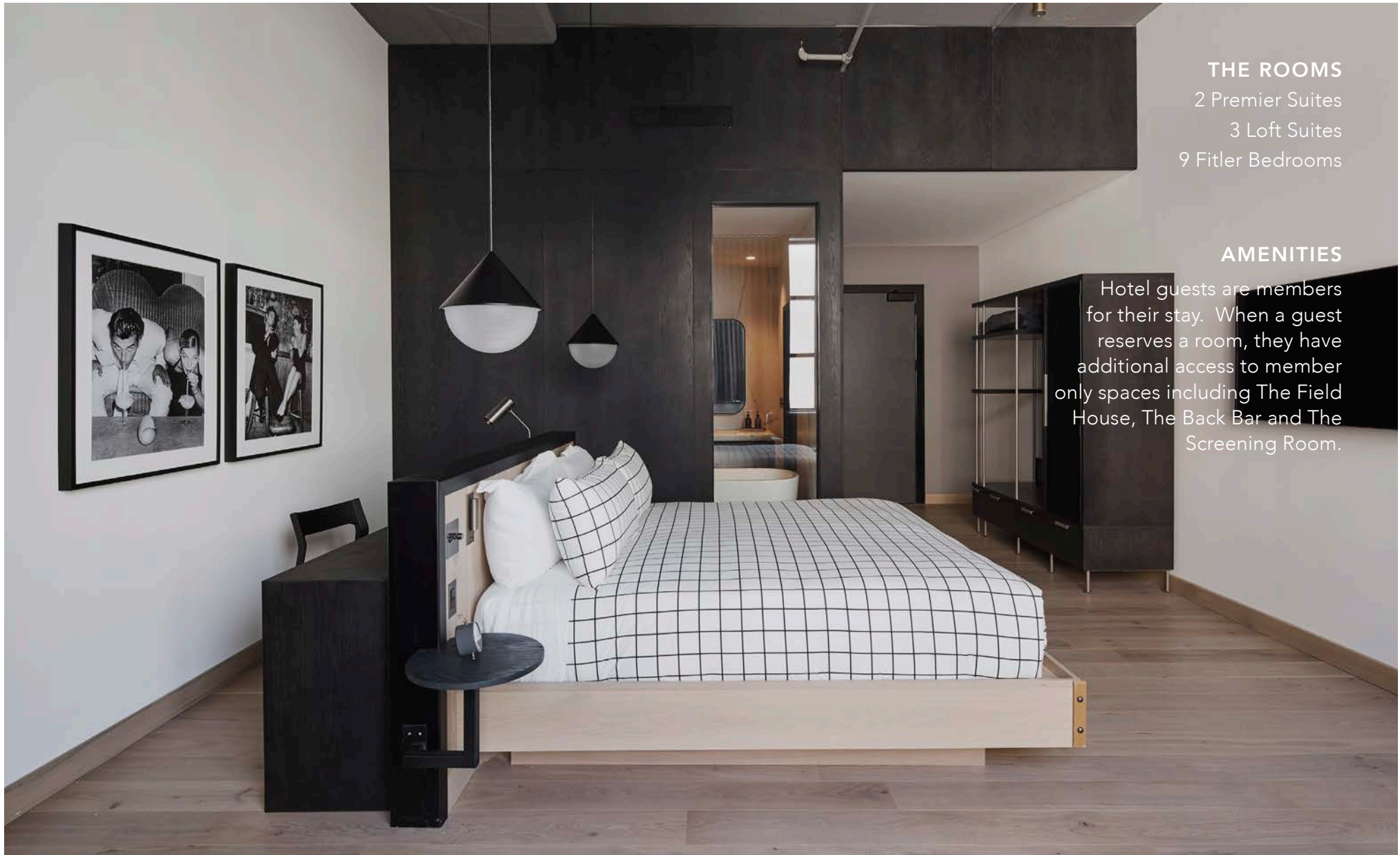
2 Premier Suites

3 Loft Suites

9 Fitler Bedrooms

AMENITIES

Hotel guests are members for their stay. When a guest reserves a room, they have additional access to member only spaces including The Field House, The Back Bar and The Screening Room.



Adult Sample Menu

* indicates Fitler Favorites



COCKTAIL HOUR

Butlered Hors d'Oeuvres

Grilled Baby Artichokes, Black Garlic Aioli*

Watermelon Ceviche, Avocado, Jalapeno, Sesame Cone

Smoked Salmon, Bagel Chips, Scallions*

Seared Scallop, Pork Belly, Gojuchang Aioli

New York Dog, House Mustard, Everything Spice*

Foie Gras Canape, House Jam, Cumin Caramel*

Organic Grain Bowls Market Station*

Grains: Red Quinoa, Farro Piccolo, and Cracked Wheat

Proteins: Yellowfin Tuna, Roasted Chicken, Crispy Pork Shoulder, Poached Salmon

Vegetables: Sweet Potatoes, Cherry Tomatoes, Cucumbers, Green Beans, Pearl Onions

Cheeses: Goat Cheese, Buffalo Mozzarella, Feta

Sauces: Balsamic Vinaigrette, Tahini Yogurt, Green Goddess

DINNER

First Course

Treviso and Baby Tango Salad, Grapefruit, Stone Fruit, Candied Pecans, Stracciatella*

Served with Artisanal Bread and Whipped Butter

Tablesides Entree Selection

Grilled Wagyu Flat Iron, Whipped Sweet Potatoes, Crispy Brussels Sprouts, Truffle Demi*
(or)

Roasted Branzino, Cauliflower, Crispy Capers, Golden Raisin Brown Butter*

Silent Vegetarian Entree offered Tableside

DESSERT

Butlered Miniature Desserts

Chocolate Pot de Creme | Whipped Creme Milk Chocolate Pearls*

Milkshake Shooters | Vanilla Caramel

Homemade Warm Donut Holes | Chocolate, Caramel & Seasonal Dipping Sauces*

Cheesecake Bites | Chocolate-Dipped, Vanilla Bean

La Colombe Caffeinated & Decaffeinated Coffee & Tea

Sample Bar Menu

HOSTED BAR

Deluxe Bar

Frico Bianco, Delle Venezie, Italy

Sauvignon Blanc, Manta, Valle de Maule, Chile

Frico Rosso, Tuscany, Italy

Cabernet Sauvignon, Sagelands, Columbia Valley, WA

Assorted Beer

Tito's & Stolli Vodka

Tanqueray & Bluecoat Gin

Cruzan & Myer's Dark Rum

Cazadores Blanco & Espolon Reposado Tequila

Jim Beam & Buffalo Trace Bourbon

Bulleit & Resurgent Rye

Johnny Walker Black & Famous Grouse Scotch



Pricing

ADULT MITZVAH MEAL AND BEVERAGE PACKAGE

- Cocktail Hour, including 1 Market Station and 6 Butler Passed Hors d'Oeuvres
- Courses (1 First Course, Select 2 Entrées for Tableside Selection, 4 Butler Passed Desserts)
- Includes Group Menu Tasting for Four Guests

ADULT BEVERAGE PACKAGE

- Deluxe Package including Spirits, Beer, and House Red, White, Sparkling Wine and Tableside Wine Service
- Premium Beverage Package Available for Supplemental Charges of \$15

Fitler Club does not allow outside alcohol to be used in functions, our sommelier is available to consult and will procure the clients request and expense any beverage that is available in the state of Pennsylvania.

Bartender fee of \$250 each, one bartender per 50 guests required.

TROPHY ROOM FEE | \$1000 PER HOUR

- Includes Bowling and Games

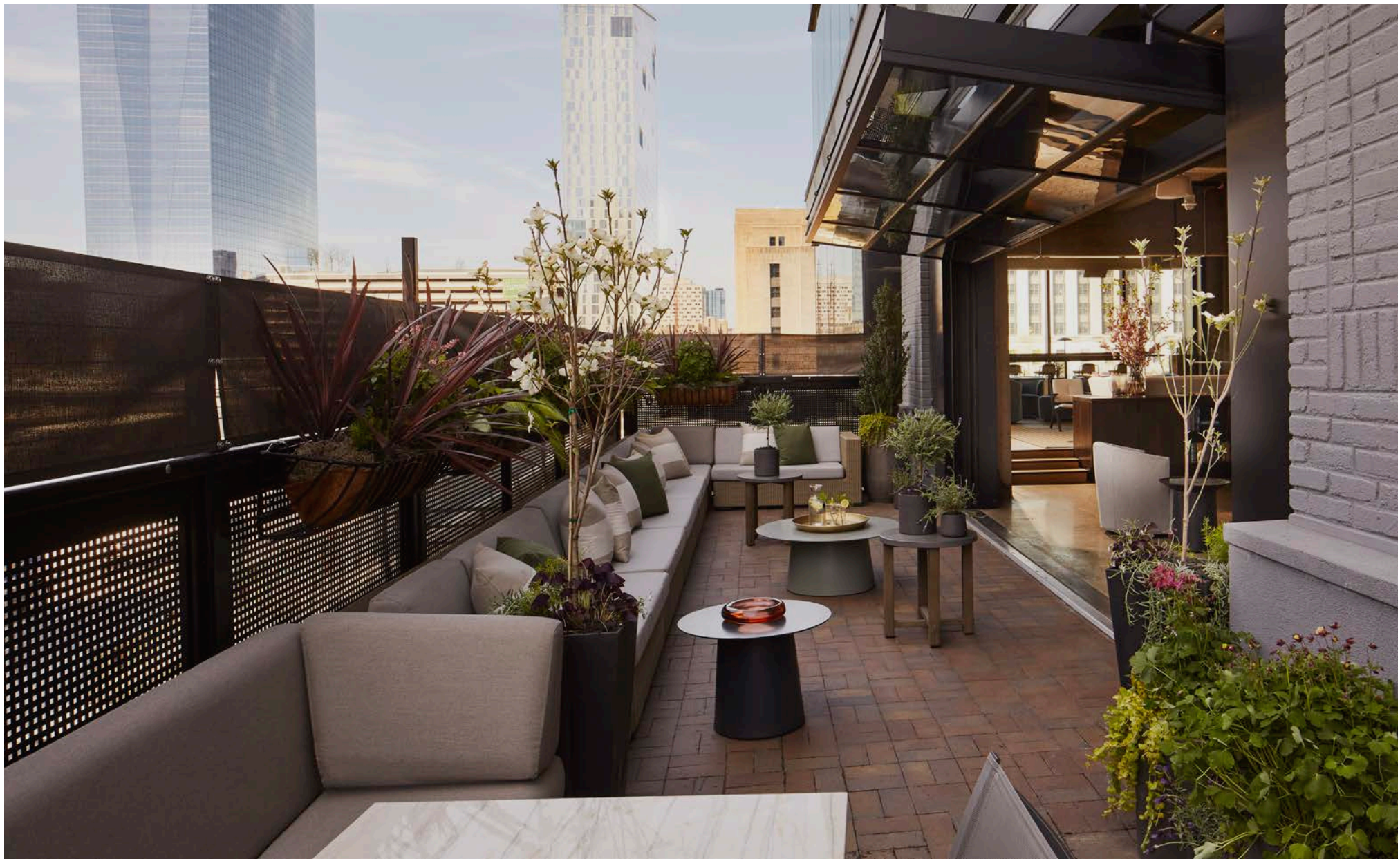
Food and Beverage price subject to 23% service charge, applicable sales tax.

IN-HOUSE WEEKEND ENHANCEMENTS AVAILABLE

- Fitler Rooms: In-House Room Block Available
- Brunch in a Private Room
- Private Movie Screening
- Valet Parking Available



Preferred pricing for all members. For membership details, email membership@fitlerclub.com.



Membership

Our private membership club is more than a social club - Fitler Club is a progressive community of thought leaders and changemakers instrumental in revitalizing Philadelphia and its efforts for growth. We invite you to join us. Preferred pricing for meetings and events for all members. For membership details, email membership@fitlerclub.com.

MORE INFORMATION

events@fitlerclub.com

215-575-9092

fitlerclub.com



MAZEL TOV