

*Fittler Club*

**MEETINGS**

---

24 S 24th Street Philadelphia, PA 19103



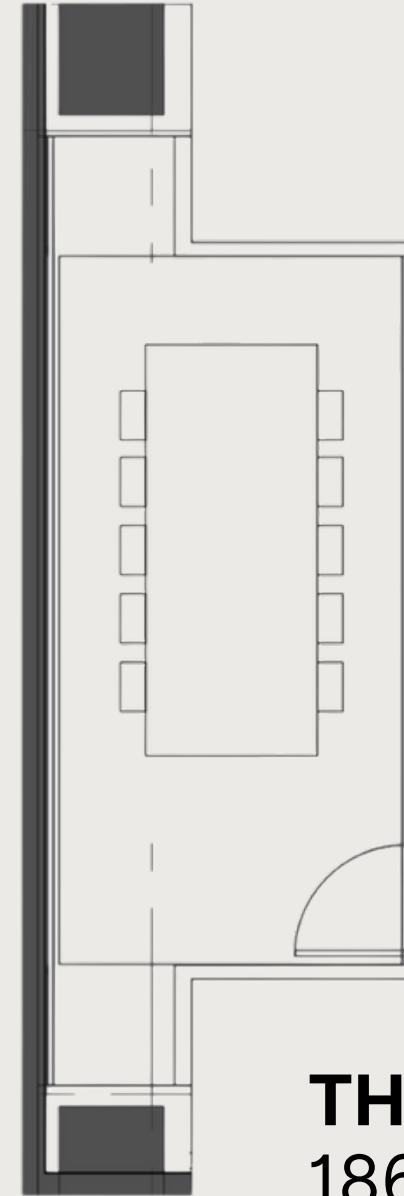
— The Gallery in Offsite

# EVERYTHING YOU NEED TO HOST YOUR TEAM

From shared workspace to private meeting rooms, conference rooms and more, if you're hosting a meeting, Offsite is the place to be.



# THE GLASS BOARDROOM



## THE DETAILS

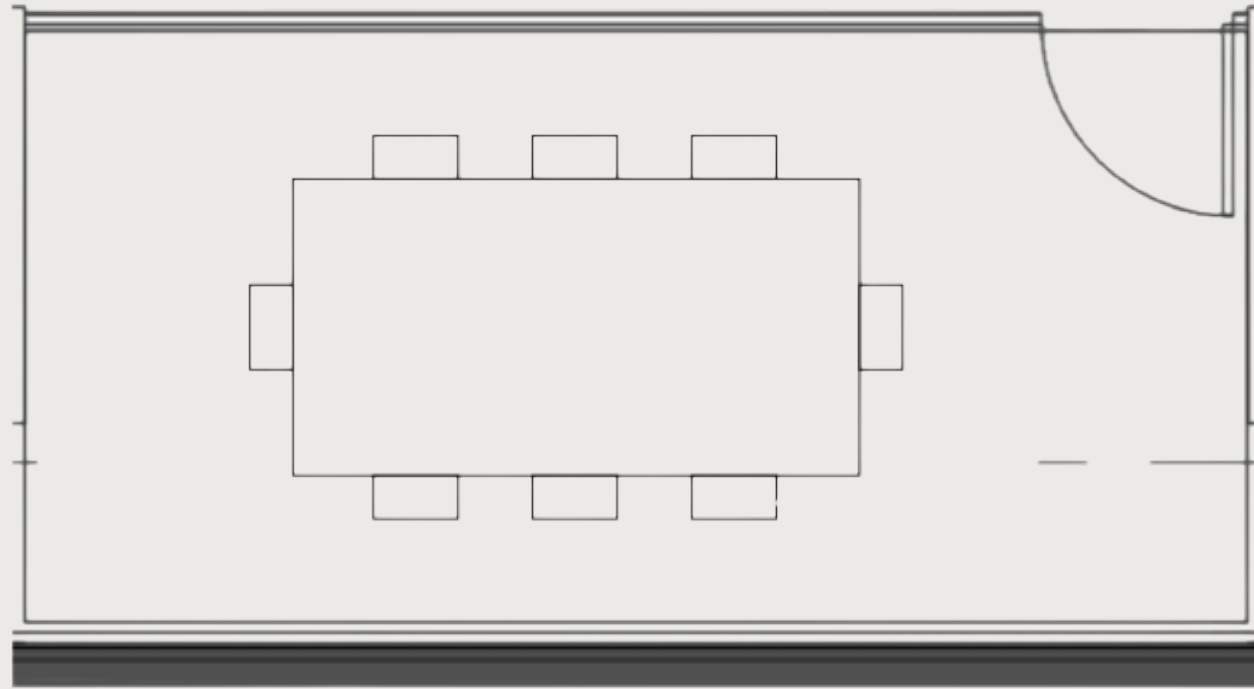
186 sq. ft.

Capacity: 10

Dimensions: 10.5' x 18'



# THE EXECUTIVE BOARDROOM



## THE DETAILS

195 sq. ft.

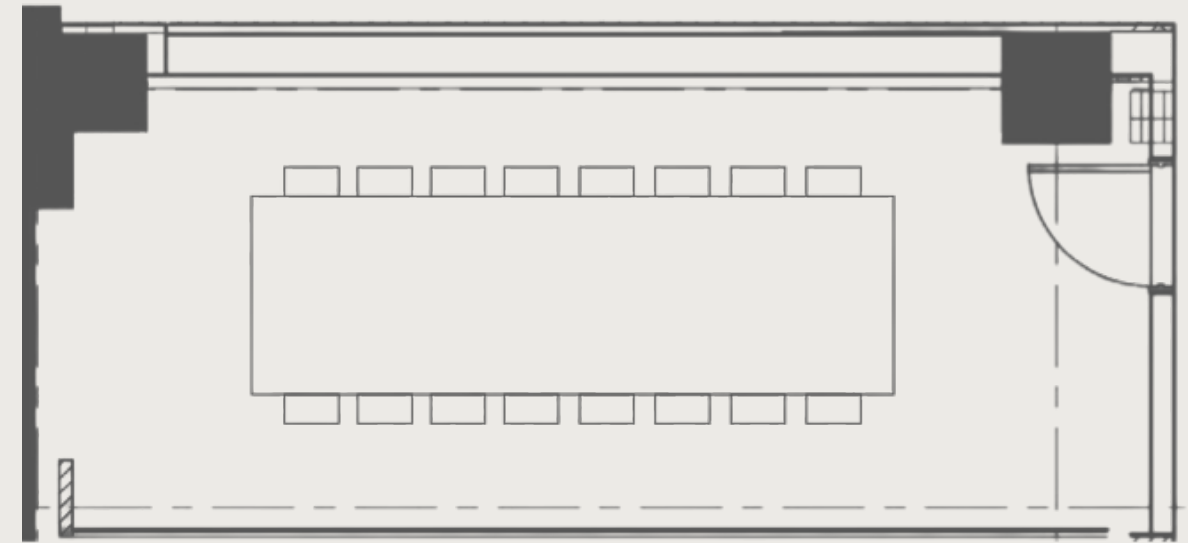
Capacity: 8-10

Dimensions: 10.5' x 18'





# THE BOARDROOM



## THE DETAILS

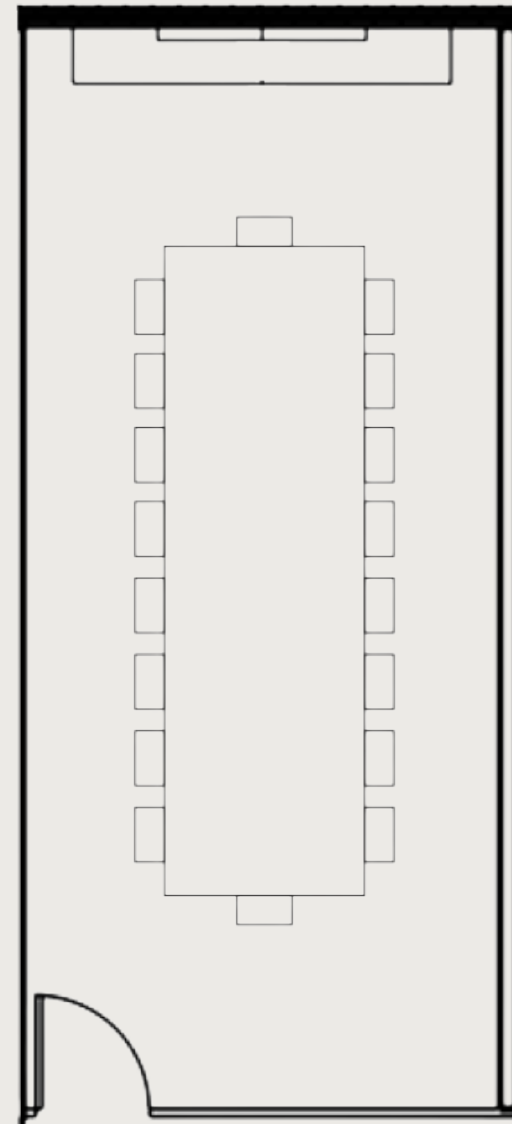
253 sq. ft.

Capacity: 16

Dimensions: 11' x 23'



# THE SQUARE BOARDROOM



## THE DETAILS

340 sq. ft.

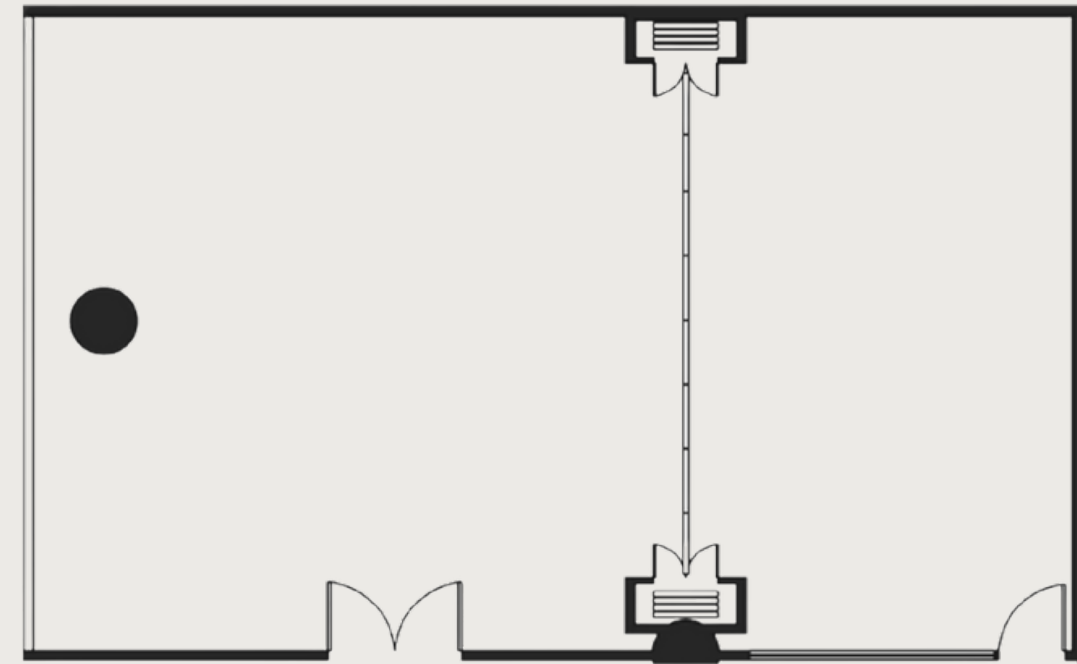
Capacity: 18

Dimensions: 20' x 28'





# THE SQUARE



## THE DETAILS

1,280 sq. ft.

Capacity: 60 Classroom; 80 Theater

Dimensions: 46' x 28'



# THE STUDY & THE STUDIO



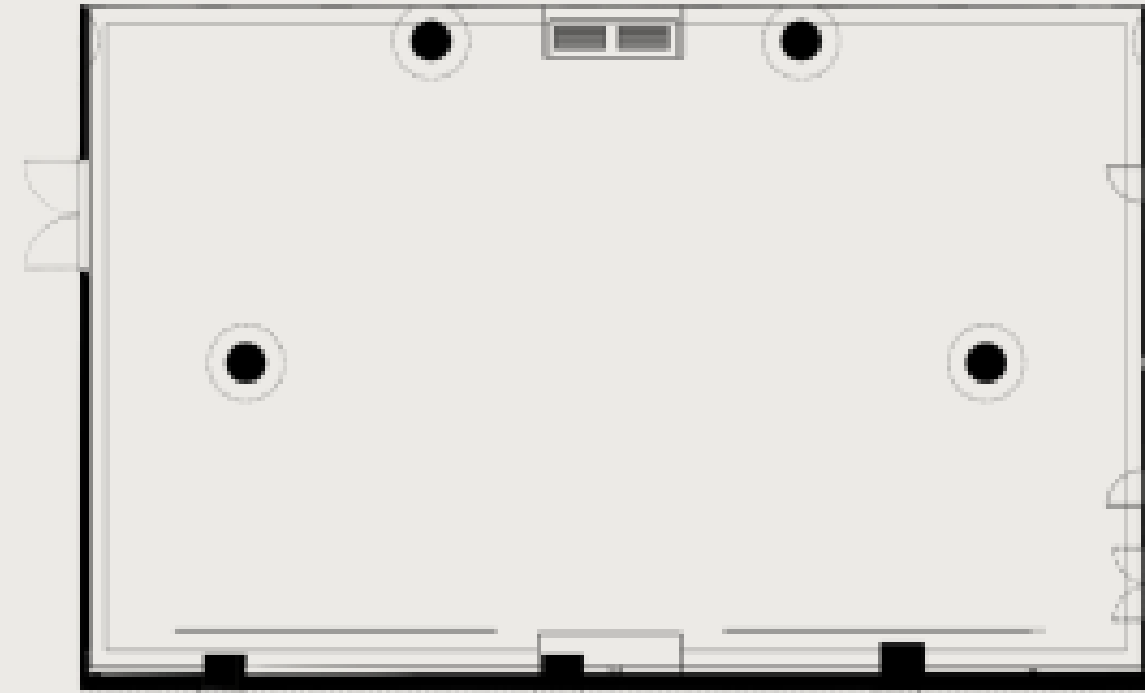
**THE DETAILS**  
107 sq. ft.  
Capacity: 6



**THE DETAILS**  
140 sq. ft.  
Capacity: 6



# THE BALLROOM



## THE DETAILS

4,600 sq. ft.

Capacity: 300

Dimensions: 54' x 85'





# TEAM MEMBERSHIP

If you foresee your team booking corporate events at the Club on a regular basis, Team Membership may be of interest. This membership is available for small to mid-sized companies or teams within larger companies looking to have a downtown hub for their employees.

Companies with Team Memberships receive a 50% room rental discount and 10% food discount with the opportunity to scale discounts on private events by committing to an annual minimum spend. For more information, complete [this inquiry form](#).



A modern office interior featuring a conference table with several black office chairs. The room has large windows, framed artwork on the walls, and a potted plant. A white text box is overlaid in the center of the image.

# GET IN TOUCH

For more information, contact our team at [events@fitlerclub.com](mailto:events@fitlerclub.com).

215-575-9092

[www.fitlerclub.com](http://www.fitlerclub.com)